

OCTOBER 8, 2007


FLORIDA DEPARTMENT of HEALTH  
CHILDHOOD LEAD POISONING PREVENTION PROGRAM

**Lead Alert Network : Alerting the Public of Products Recalled Due to Lead Hazards**

## **LEAD ALERT**

### **NEW PRODUCT RECALLS DUE TO LEAD CONTENT**

**Consumers should immediately take the recalled items below away from children. Information about manufacturer refunds, replacements, and/or disposal options is included in the following links.**

| <i>Recalled Product</i>  | <i>Recall Photos</i>   |
|--|--|
| <p>1. <a href="http://www.cpsc.gov/cpsc/pub/prerel/prhtml07/07308.html">RC2 Corp. Recalls Additional Thomas &amp; Friends Wooden Railway Toys Due to Violation of Lead Paint Standard</a></p> <p>&lt;<a href="http://www.cpsc.gov/cpsc/pub/prerel/prhtml07/07308.html">http://www.cpsc.gov/cpsc/pub/prerel/prhtml07/07308.html</a>&gt;</p> |  <p>The image shows five recalled toys from the Thomas &amp; Friends Wooden Railway line. At the top left is a black cargo car. To its right is a grey and white 'Load' vehicle with a red brake lever. Further right is a green cargo box with 'SODOR' written on it. Below these are two more items: a green maple tree top and a green signal base.</p> |
| <p>2. <a href="http://www.cpsc.gov/cpsc/pub/prerel/prhtml07/07308.html">Target Recalls Children's Toy Gardening Tools and Chairs Due to Violation of Lead Paint Standard</a></p> <p>&lt;<a href="http://www.cpsc.gov/cpsc/pub/prerel/prhtml07/07308.html">http://www.cpsc.gov/cpsc/pub/prerel/prhtml07/07308.html</a>&gt;</p>              |  |

[9.html](#)>



NOTE: Click [here](#) to see all products included in this recall.

3. [RC2 Recalls Knights of the Sword Toys Due to Violation of Lead Paint Standard](#)

<<http://www.cpsc.gov/cpscpub/prerel/prhtml07/07310.html>>



NOTE: Click [here](#) to see all products included in this recall.

4. [Children's Toy Rakes Sold Exclusively at Jo-Ann Fabric and Craft Stores Recalled Due to Violation of Lead in Paint Standard](#)

<<http://www.cpsc.gov/cpscpub/prerel/prhtml07/07311.html>>



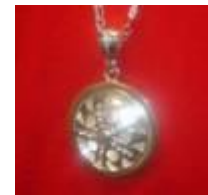
5. [Guidecraft Inc. Recalls Children's Puppet Theaters Due to Violation of Lead Paint Standard](#)

<<http://www.cpsc.gov/cpscpub/prerel/prhtml07/07312.html>>



6. [Children's Spinning Wheel-Metal Necklaces Recalled By Rhode Island Novelty Due to Risk of Lead Exposure](#)

<<http://www.cpsc.gov/cpscpub/prerel/prhtml07/07313.html>>



7. [TOBY N.Y.C. Expands Children's Metal Jewelry Recall Due to Risk of Lead Exposure](#)

<<http://www.cpsc.gov/cpscpub/prerel/prhtml07/07314.html>>



**\*NOTE: Click [here](#) to see all products included in this recall.**

[Click here to visit the Childhood Lead Poisoning Prevention Program's Website](#)

[Click here to view a fact sheet about testing for lead in consumer items for children](#)

[Click here to receive email announcements about the latest lead recalls](#)

*Under Florida law, e-mail addresses are public records. If you do not want your e-mail address released in response to a public records request, do not send electronic mail to this entity. Instead, contact this office by phone or in writing.*

---

Dear Partners,

Childhood lead poisoning is completely preventable. Please be aware of lead sources and help educate parents and caregivers about the potential danger of these products. Lead poisoning can affect nearly every system in the body. Because lead poisoning often occurs with no obvious symptoms, it frequently goes unrecognized. Lead poisoning can cause learning disabilities, behavioral problems, and, at very high levels, seizures, coma, and even death. A blood lead test is the only way to know if a child has been exposed to lead.

Please help us educate others by doing the following:

- Share this alert with clients, family members and neighbors with young children.
- Provide a copy of this Lead Alert! to pediatricians and health care providers.
- Post pictures of recalled items at childcare centers or other places visited by families with young children.
- Urge parents to request a blood lead test for their child.
- Remember, consumer products are not the only sources of lead for children. Please also be aware of the sources described below.

### **Other Lead Sources**

Other potential sources of lead include:

- Lead-based paint
- Lead contaminated household dust
- Lead contaminated soil
- "Take Home Lead": Lead dust carried home from hobbies or occupations that involve lead
- Imported consumer products such as pottery, mini-blinds or costume jewelry
- Non-western home remedies or folk remedies

For information on other sources of lead that may harm children please visit the Florida Department of Health's Childhood Lead Poisoning Prevention Program's Website:

<http://www.doh.state.fl.us/environment/community/Lead/faq.htm>

Thank you for your ongoing commitment to protecting children from lead poisoning.

Sincerely,

**Florida's Childhood Lead Poisoning Prevention Program**